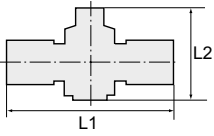


Unidirectional flow control valves with male thread and plug connection, straight type

»blue series«

EASY



286.014-6

Unidirectional flow control valve with parallel male thread and plug connection, straight type, air restriction from port to tube

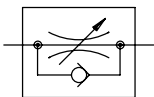
Art. No.	Type No.	Thread	For tube O.D. mm	L1 mm	L2 mm	a/f mm
135811	286.018-4	G 1/8	4	46.5	28.0 - 31.0	12
135812	286.018-6	G 1/8	6	54.1	40.7 - 47.5	14
135813	286.018-8	G 1/8	8	58.5	44.1 - 51.8	14
135814	286.014-6	G 1/4	6	55.6	40.7 - 47.5	14
135815	286.014-8	G 1/4	8	60.0	44.1 - 51.8	17
135816	286.014-10	G 1/4	10	69.9	47.7 - 55.3	17
135817	286.014-12	G 1/4	12	80.4	52.0 - 58.0	21
135818	286.038-8	G 3/8	8	61.5	44.1 - 51.8	17
135819	286.038-10	G 3/8	10	71.4	47.7 - 55.3	20
135820	286.038-12	G 3/8	12	81.4	52.0 - 58.0	21
135821	286.012-10	G 1/2	10	74.9	47.7 - 55.3	19
135822	286.012-12	G 1/2	12	84.9	52.0 - 58.0	24



287.014-6

Unidirectional flow control valve with conical male thread and plug connection, straight type, air restriction from port to tube

Art. No.	Type No.	Thread	For tube O.D. mm	L1 mm	L2 mm	a/f mm
135823	287.018-4	R 1/8	4	46.0	28.0 - 31.0	10
135824	287.018-6	R 1/8	6	54.1	40.7 - 47.5	12
135825	287.018-8	R 1/8	8	59.0	44.1 - 51.8	14
135826	287.014-6	R 1/4	6	56.6	40.7 - 47.5	14
135827	287.014-8	R 1/4	8	61.0	44.1 - 51.8	14
135828	287.014-10	R 1/4	10	71.4	47.7 - 55.3	17
135829	287.014-12	R 1/4	12	82.8	52.0 - 58.0	21
135830	287.038-8	R 3/8	8	62.5	44.1 - 51.8	17
135831	287.038-10	R 3/8	10	72.4	47.7 - 55.3	17
135832	287.038-12	R 3/8	12	83.8	52.0 - 58.0	21
135833	287.012-10	R 1/2	10	75.9	47.7 - 55.3	21
135834	287.012-12	R 1/2	12	86.8	52.0 - 58.0	21



Unidirectional flow control valves with plug connection, straight type

»blue series«

EASY



181.0808

Unidirectional flow control valve with plug connection, straight type

Art. No.	Type No.	For tube O.D. mm	L1 mm	L2 mm
109972	181.0404	4	39.5	28.3 - 30.8
109973	181.0606	6	47.1	41.0 - 47.2
109974	181.0808	8	52.0	44.4 - 51.5
109975	181.1010	10	62.3	48.0 - 55.0
109976	181.1212	12	73.6	52.3 - 57.7